



**KIMPEX**

RIDING THROUGH  
REGIONS AND SEASONS

# COMMANDER HD4

HEAVY-DUTY  
UTV TRACK SYSTEM



A Kimpex Commander HD4 UTV is shown in a forest setting, towing a boat on a trailer. The UTV is orange and black, with 'XPEdition' and '1000 ADV' visible on its side. It has a black storage box on the roof and is equipped with a track system. The background is a dense forest of evergreen trees.

**KIMPEX**

# COMMANDER HD4

CONCEPT

## HEAVY-DUTY UTV TRACK SYSTEM

4,000 LBS. LOAD CAPACITY

UNRIVALLED 4-SEASON  
PERFORMANCE

MINIMAL MAINTENANCE

Kimpex introduces the Commander HD4, a track system designed for heavy-duty work with minimum effort from your part. With a 4,000 lbs load capacity, the HD4 is the most robust and powerful track system in the powersport industry. Unsurpassed in the mud thanks to multi-level protection of bearings, this system is very easy to handle while providing incredible comfort and surprisingly quiet ride on rough terrains and at high-speed. The components are so sturdy that the track system requires minimal maintenance.





CONCEPT

# JOINING THE BIG LEAGUE



From the key concepts that inspired it to the materials it is made of, the Commander HD4 draws the best from tracked industrial equipment.

This track system is the result of several years of research combined with Soucy's world renowned expertise in the military and agricultural sectors. On its own, the HD4 holds nearly ten pending patents.

Some of the pictures show only prototypes and may differ from the finished product.



**KIMPEX**

**COMMANDER  
HD4**



*The picture shows only a prototype and may differ from the finished product.*

**COMMANDER HD4: Specifically designed to meet the weight and dimensions requirements for today's vehicles**

In 2011, side-by-side vehicles delivered 46 horsepower and had a weight of 1,400 lbs.

Today's vehicles deliver over 200 horsepower and can weigh up to 2,900 lbs. with a GVWR \* of 5,000 lbs.

*\*Gross vehicle weight rating of the vehicle.*

**TRACK SYSTEMS OFFERED  
ON TODAY'S MARKET ARE  
NOT DESIGNED TO SUPPORT  
SUCH WEIGHT.**

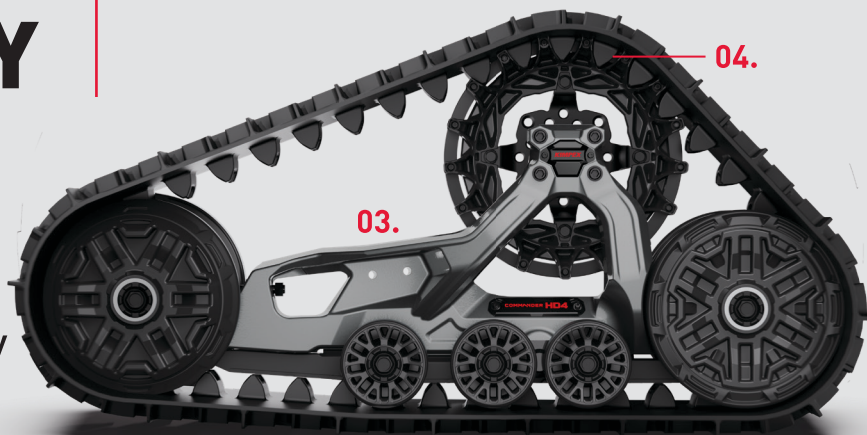
**BUT THE COMMANDER HD4 DOES!**



# 4,000 LBS. LOAD CAPACITY

THE MOST ROBUST AND MASSIVE COMPONENTS IN THE INDUSTRY TO SUPPORT AND CARRY HEAVY LOADS.

Traction power uniformly applied onto the track



01. Sprocket with wide driving teeth.

02.

VIEW FROM A REAR CORNER.

02. Longer ground contact area in the back.

03. Frame configuration designed to uniformly transfer the axle load towards the track.

04. Traction lugs of the tracks are 46% higher and 79% wider than those of the competition.

## Automotive-style roller bearings

05. Massive double-row tapered roller bearings for the main axle, 4 times more robust than the competition.

06. Greasable triple lip seal to protect bearing.



EXPLODED VIEW: SPROCKET, AXLE, SEAL AND BEARING.

VIEW OF THE HD4 SYSTEM WITHOUT THE TRACK.



**KIMPEX**

**COMMANDER  
HD4**

**SPRING  
SUMMER  
FALL  
WINTER**



# **UNRIVALLED 4-SEASON PERFORMANCE**

## **RIGOROUS DESIGN:**

*Several pending patents*



« We did not reuse any existing components, nor did we attempt to create one-size-fits-all components. Instead, we optimized the design of each part for its specific purpose in the HD4 track kit. »

**JÉRÉMIE AUBIN-MARCHAND** \_ *Engineer, technical expert*

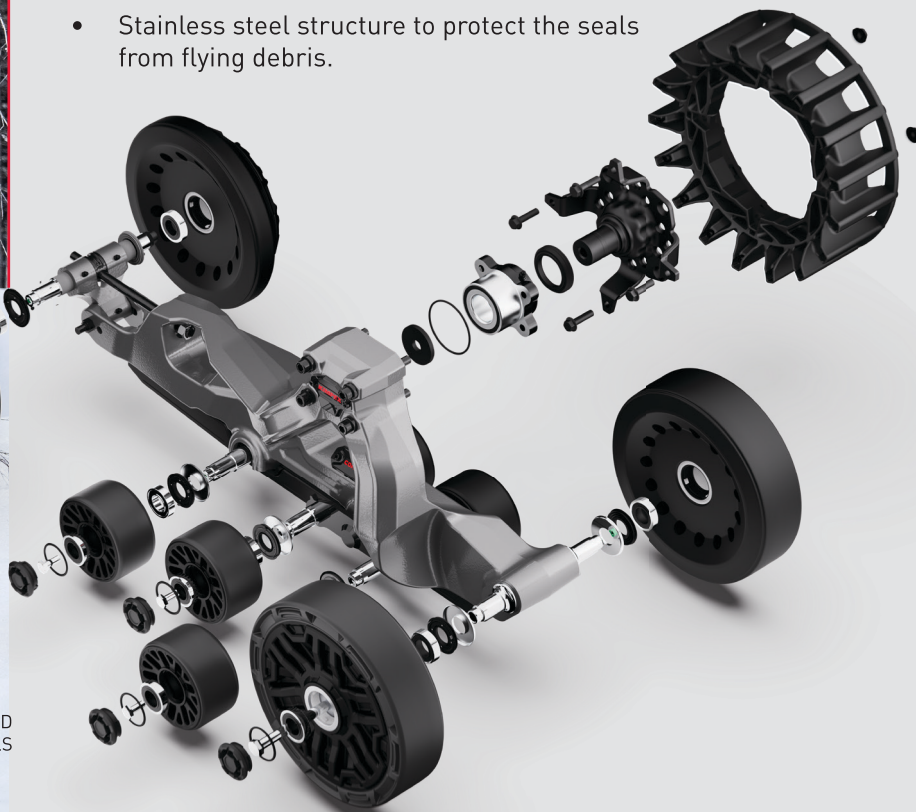


UNSURPASSED IN MUD  
AND WATER, WITH THE  
GREATEST RESISTANCE  
TO IMMERSION FOR  
LONG PERIODS OF TIME.

Optimal multi-level protection of bearings  
against water and dirt infiltration for the  
longest lifespan in the market.



- Completely sealed exterior of the main axle bearings.
- Triple-lip greased seals to prevent water, dirt and sand infiltration into the bearings of the main axle and the wheels.
- Protective caps sealed on the wheels (Patent pending).
- Stainless steel structure to protect the seals from flying debris.



VIEW OF THE WHEELS AND  
PROTECTION LEVELS

## WHEEL-GUIDED SYSTEM: OFF-ROAD, EVERY SEASON

### WITH ITS UNIQUE DESIGN, THE COMMANDER HD4 TOTALLY REDEFINES THE SLIDE FUNCTION

Standing out from the competition, the HD4 is the only high-traction system relying solely on wheels to guide the track, not the slides.

Rather than acting as a guide, the HD4 slide is dedicated exclusively to shock absorption, significantly improving the rider's comfort. Located under the frame in a buffer zone, the slide is subject to virtually no wear. Compared to guide slides in traditional systems, the HD4's comfort slide is extremely durable, especially under the highest abrasion conditions.



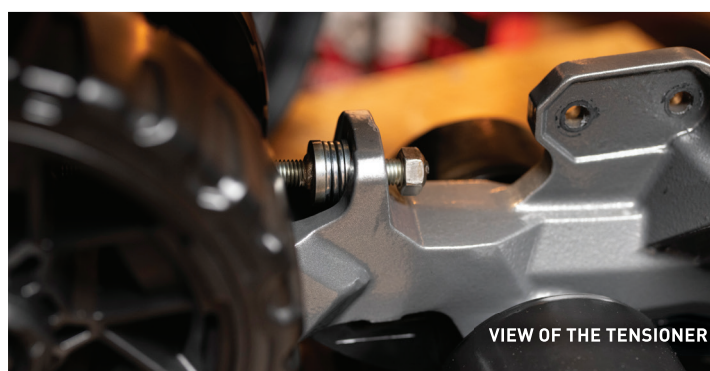
The picture shows only a prototype and may differ from the finished product.



# MINIMAL MAINTENANCE

« I WANT A STURDY, SOLID MACHINE THAT DOES NOT NEED  
CONSTANT REPAIR AND MAINTENANCE »

SCOTT \_ Ranch owner, first user of the Commander HD4



The pictures show only prototypes and may differ from the finished product.

## EASY SERVICE AND MINIMAL MAINTENANCE



Only system fully resistant to  
**high pressure cleaning.**



Bolt-on main axle bearing for  
**easy replacement.**



Independent bearings and seals on all  
wheels **allowing individual replacements.**



Grease port integrated into the main axle  
to **facilitate lubrication of the main seal**  
and **complete drainage of water** after  
extended immersion.



Track tension **visual indicator integrated**  
for **quick, easy, tool-free adjustment**  
inspection.

**BEST 3-YEAR WARRANTY**  
**IN THE INDUSTRY**

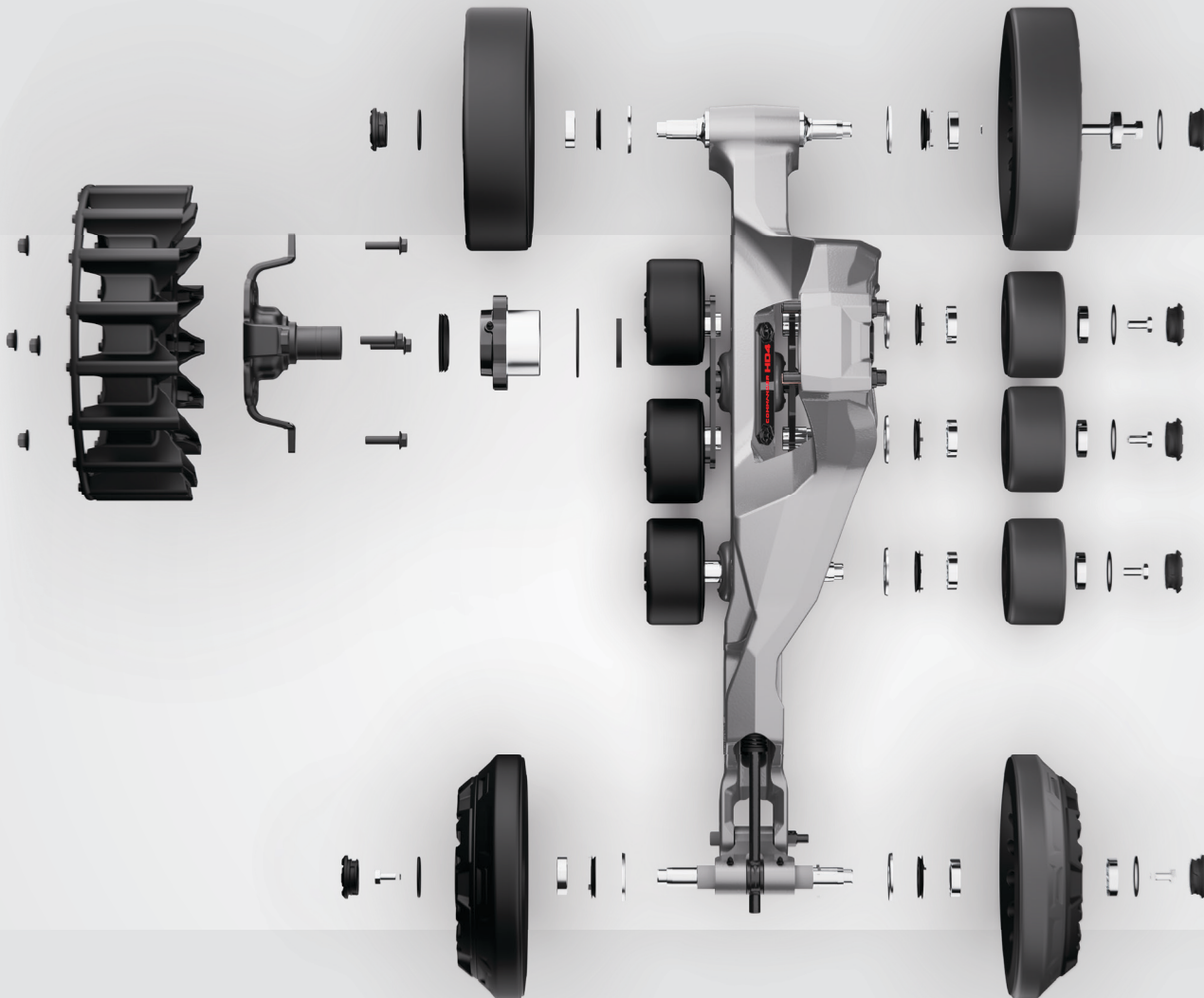


**GET 1 EXTRA YEAR OF WARRANTY BY**  
REGISTERING YOUR COMMANDER TRACK SYSTEM



# STURDY AND DURABLE

ASSEMBLED WITH  
PREMIUM PARTS AND  
MATERIALS



- **Ultra thick sturdy Compressed UHMW-PE sprocket teeth** for ultimate service life.
- **1.58 in (40 mm) forged chromoly main axle** for increased load capacity.
- **Triple-lip seal with integrated grease port** for easy lubrication and complete water drainage.
- **Automotive style bolt-on double-row tapered roller bearings.**
- **One-piece cast frame** made of fatigue and rust resistant 206 aluminum alloy.
- **Guide wheels with aluminum core** for increased longevity.
- **Tandem made of very hard Hardox® 450 steel** featuring high resistance to impacts and to bending under heavy loads.
- **Pivoting axle made of 7075 aluminum over-molded with rubber** for high strength.
- **Chromoly tensioner shafts** for high protection against impacts when crossing obstacles.
- Tracks feature **extra wide traction lugs designed** for torque transmission.
- **Intermediate support wheels made of sturdy UHMW-PE** for high abrasion resistance.
- **Screw-on wheel caps with O ring** to prevent contamination.



# GREAT HANDLING AND UNPARALLELED COMFORT ON ROUGH TERRAIN

## Best handling with the smallest turning radius in the industry

- Optimized track profile with horizontally alternating lugs to prevent lateral sliding.
- Minimal alteration of the vehicle's original turning radius.



## GREAT COMFORT AND INCREDIBLE QUIET RIDE AT HIGH SPEED

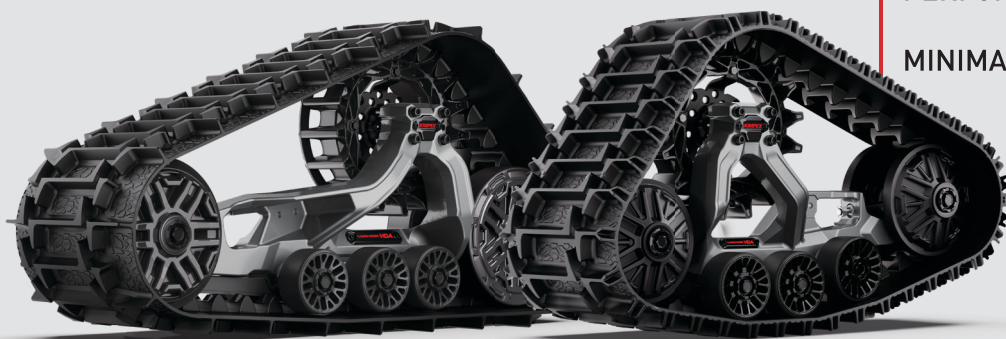
### Better shock absorption and vibration reduction

- Optimized track tread for comfortable and quieter rides.
- Optimized shock absorption for increased comfort in rugged terrain thanks to the thick rubber strips covering the front and rear guide wheels, the comfort slide under the frame, and the rear wheel tandem.
- Optimized wheel spacing to reduce vibrations.





INDUSTRIAL TRACK



PERFORMANCE TRACK

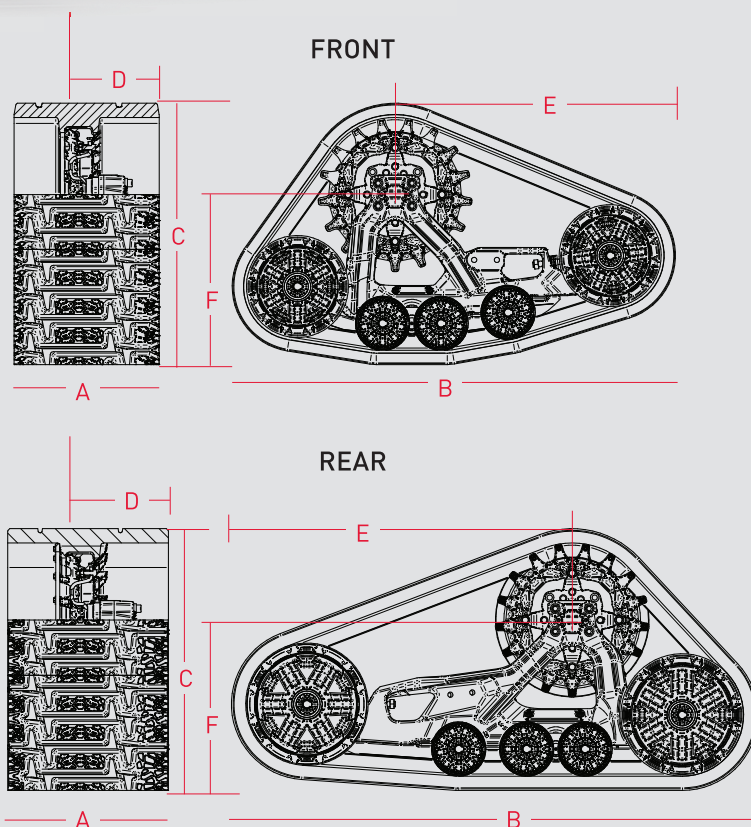
4,000 LBS. LOAD CAPACITY

UNRIVALLED 4-SEASON  
PERFORMANCE

MINIMAL MAINTENANCE

## TECHNICAL SPECIFICATIONS

SYSTEM		
	Weight	Front : 58,5 kg (129 lb) Rear : 85,2 kg (188 lb)
A	Width	Front : 356 mm (14 po) Rear : 394 mm (15.5 po)
B	Length	Front: 1 086 mm (42,8 po) Rear: 1 290 mm (50,8 po)
C	Height	Front: 640 mm (25,2 po) Rear: 641 mm (25,2 po)
D	Offset Width	Front: 221 mm (8.7 po) Rear: 240 mm (9.5 po)
E	Offset Length	Front: 686 mm (27 po) Rear: 838 mm (33 po)
F	Ground Clearance	Front: 416 mm (16,38 po) Rear: 419 mm (16,5 po)
	Ground Surface	1,78 m² [2 761 po²]
	Maintained Speed (average)	2/3
	Ground Clearance Offset (average)	+ 127 mm (5 po)
TRACKS		
A	Width	Front : 356 mm (14 po) Rear : 394 mm (15.5 po)
	Length	Front: 2 540 mm (100 po) Rear: 2 964 mm (116,7 po)
	<b>PERFORMANCE TRACK :</b> Lug Height	28,6 mm (1.125 po)
	<b>INDUSTRIAL TRACK :</b> Lug Height	15,8 mm (0,625 po)



BOLT PATERN		
4 BOLTS 4/110, 4/115 , 4/137, 4/156	5 BOLTS 5/114.3	6 BOLTS 6/139.7





**KIMPEX**

**COMMANDER  
HD4**

HEAVY-DUTY  
UTV TRACK SYSTEM

4,000 LBS. LOAD CAPACITY // REAL 4-SEASON PERFORMANCE // MINIMAL MAINTENANCE

**KIMPEX.COM**

6400 SAINT-ROCH STREET, DRUMMONDVILLE, QUEBEC J2B 6V4