



KIMPEX

RIDING THROUGH
REGIONS AND SEASONS

COMMANDER
HD4

HEAVY-DUTY
UTV TRACK SYSTEM

A red and black Kimpex Commander HD4 UTV is shown in a forest setting, towing a boat. The vehicle is equipped with a track system and has a storage box on the roof. The background is a dense forest with tall trees.

KIMPEX

COMMANDER HD4

CONCEPT

HEAVY-DUTY UTV TRACK SYSTEM

4,000 LBS. LOAD CAPACITY

UNRIVALLED 4-SEASON
PERFORMANCE

MINIMAL MAINTENANCE

Kimpex introduces the Commander HD4, a track system designed for heavy-duty work with minimum effort from your part. With a 4,000 lbs load capacity, the HD4 is the most robust and powerful track system in the powersport industry. Unsurpassed in the mud thanks to multi-level protection of bearings, this system is very easy to handle while providing incredible comfort and surprisingly quiet ride on rough terrains and at high-speed. The components are so sturdy that the track system requires minimal maintenance.

CONCEPT

JOINING THE BIG LEAGUE



From newly inspired key concepts to the materials it is made of, the Commander HD4 benefits from the best tracked equipment design in the industry.

This track system is the result of several years of research combined with Soucy's world renowned expertise in the military and agricultural sectors. On its own, the HD4 holds nearly ten pending patents.

Some of the pictures show only prototypes and may differ from the finished product.

KIMPEX

COMMANDER
HD4



The picture shows only a prototype and may differ from the finished product.

COMMANDER HD4: Specifically designed to meet the weight and dimensions requirements for today's vehicles

In 2011, side-by-side vehicles delivered 46 horsepower and had a weight of 1,400 lbs.

Today's vehicles deliver over 200 horsepower and can weigh up to 2,900 lbs. with a GVWR * of 5,000 lbs.

**Gross vehicle weight rating of the vehicle.*

**TRACK SYSTEMS OFFERED
ON TODAY'S MARKET ARE
NOT DESIGNED TO SUPPORT
SUCH WEIGHT.**

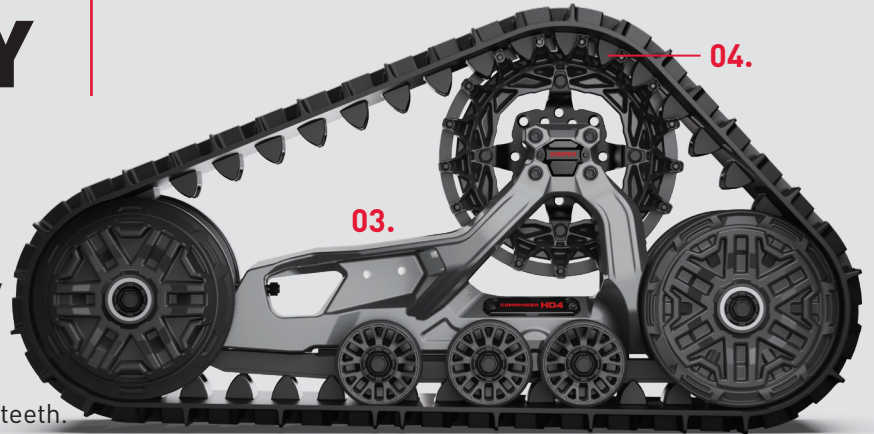
BUT THE COMMANDER HD4 DOES!

4,000 LBS. LOAD CAPACITY

THE MOST ROBUST AND MASSIVE
COMPONENTS IN THE INDUSTRY TO
SUPPORT AND CARRY HEAVY LOADS.

Traction power uniformly
applied onto the track

- 01. Sprocket with wide driving teeth.
- 02. Longer ground contact area in the back.
- 03. Frame configuration designed to uniformly transfer the axle load towards the track.
- 04. Traction lugs of the tracks are 46% higher and 79% wider than those of the competition.

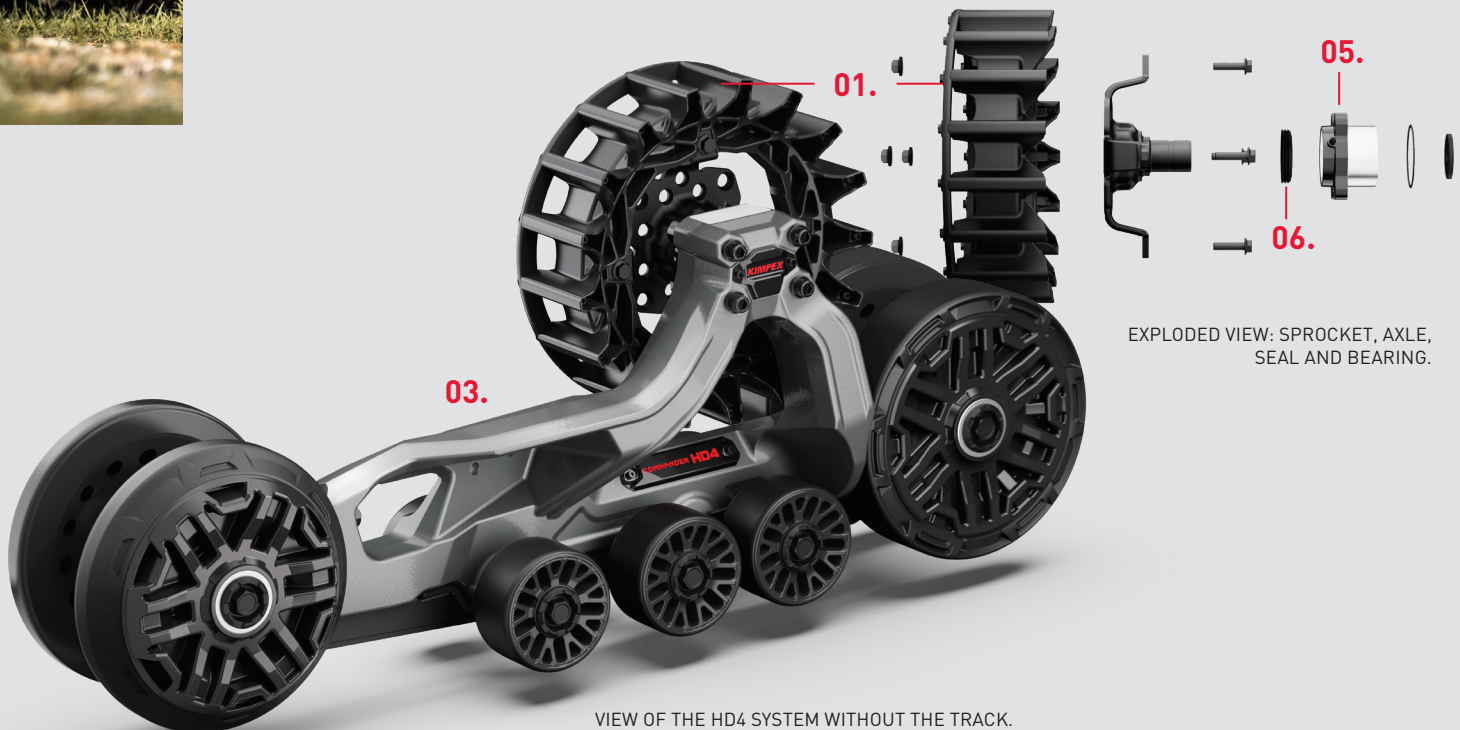


02.

VIEW FROM A REAR CORNER.

Automotive-style roller bearings

- 05. Massive double-row tapered roller bearings for the main axle, 4 times more robust than the competition.
- 06. Greasable triple lip seal to protect bearing.



EXPLODED VIEW: SPROCKET, AXLE,
SEAL AND BEARING.

VIEW OF THE HD4 SYSTEM WITHOUT THE TRACK.

KIMPEX

COMMANDER
HD4

**SPRING
SUMMER
FALL
WINTER**

UNRIVALLED 4-SEASON PERFORMANCE


RIGOROUS DESIGN:

Several pending patents



« We invested much time and effort to rigorously assess most components of all track systems available on the market. We have scrutinized each part and their operation, down to the last detail, to optimize the HD4 system. »

JÉRÉMIE AUBIN-MARCHAND _ Engineer, technical expert



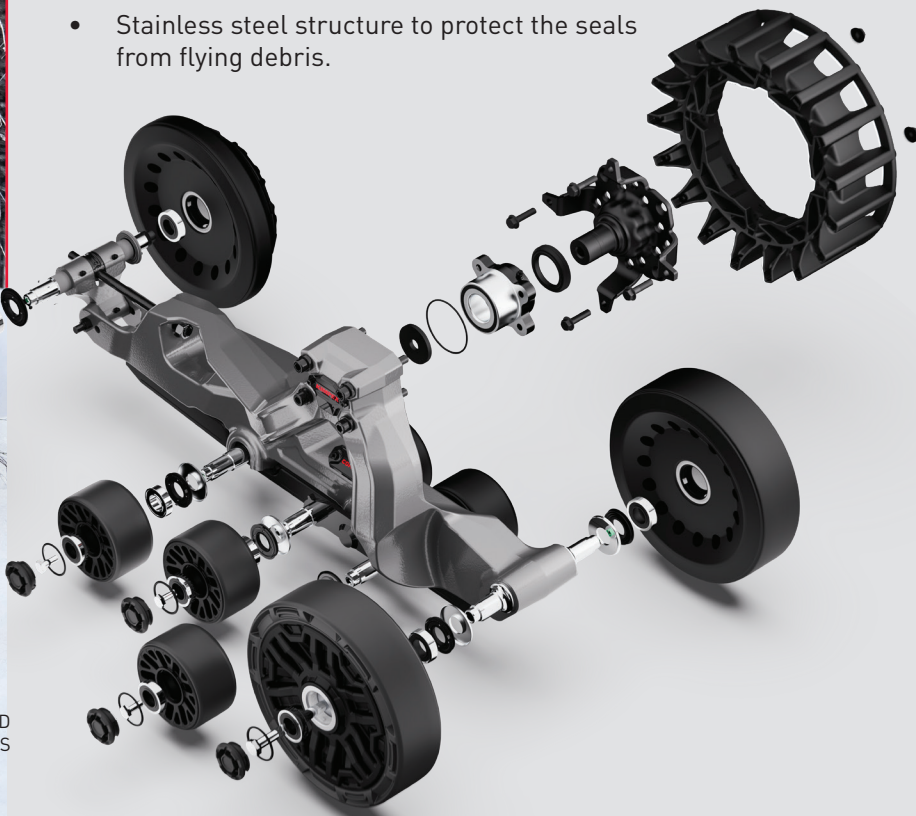
UNSURPASSED IN MUD
AND WATER, WITH THE
GREATEST RESISTANCE
TO IMMERSION FOR
LONG PERIODS OF TIME.

VIEW OF THE WHEELS AND
PROTECTION LEVELS

Optimal multi-level protection of bearings against water and dirt infiltration for the longest lifespan in the market.



- Completely sealed exterior of the main axle bearings.
- Triple-lip greased seals to prevent water, dirt and sand infiltration into the bearings of the main axle and the wheels.
- Protective caps sealed on the wheels (Patent pending).
- Stainless steel structure to protect the seals from flying debris.



COMFORT SLIDE: OFF-ROAD, EVERY SEASON

WITH ITS UNIQUE DESIGN, THE COMMANDER HD4 TOTALLY REDEFINES THE SLIDE FUNCTION

Standing out from the competition, the HD4 is the only high-traction system to use track guiding fully controlled by the wheels, not the slides.

Rather than acting as a guide, the HD4 slide is dedicated exclusively to shock absorption, significantly improving the rider's comfort. Located under the frame in a buffer zone, the slide is subject to virtually no wear. Compared to guide slides in traditional systems, the HD4's comfort slide is extremely durable, especially under the highest abrasion conditions.



The picture shows only a prototype and may differ from the finished product.

MINIMAL MAINTENANCE

« I WANT A STURDY, SOLID MACHINE THAT DOES NOT NEED
CONSTANT REPAIR AND MAINTENANCE »

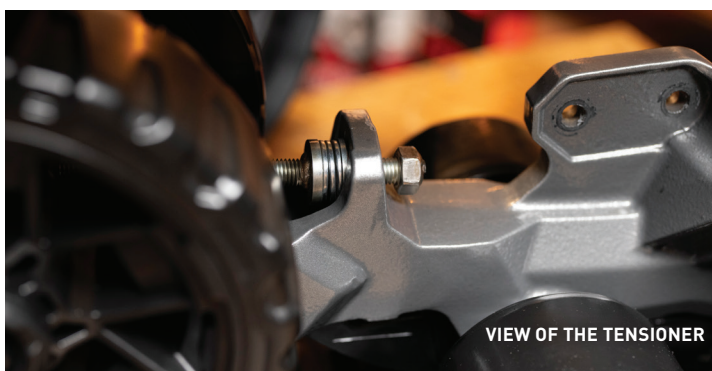
SCOTT _ Ranch owner, first user of the Commander HD4



HIGH PRESSURE CLEANING



TENSIONER ADJUSTMENT



VIEW OF THE TENSIONER

The pictures show only prototypes and may differ from the finished product.

EASY SERVICE AND MINIMAL MAINTENANCE



Only system fully resistant to
high pressure cleaning.



Main axle has bearings bolted for
easy replacement.



Independent bearings and seals on all
wheels **allowing individual replacements.**



Grease port integrated into the main axle
to **facilitate lubrication of the main seal**
and **complete drainage of water** after
extended immersion.



Track tension **visual indicator integrated**
for quick, easy, tool-free adjustment
inspection.

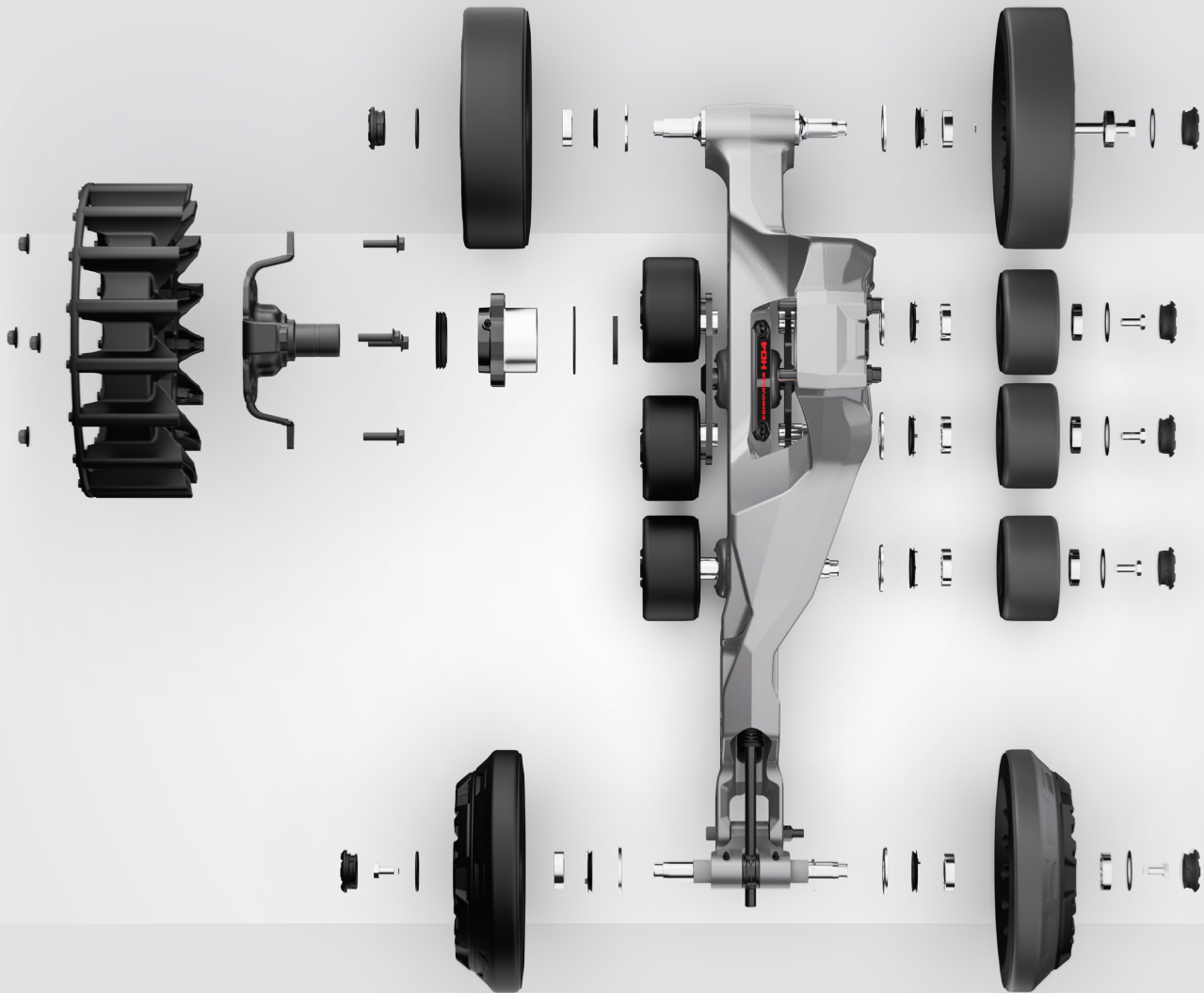
BEST 3-YEAR WARRANTY
IN THE INDUSTRY



GET 1 EXTRA YEAR OF WARRANTY BY
REGISTERING YOUR COMMANDER TRACK SYSTEM

STURDY AND DURABLE

ASSEMBLED WITH
PREMIUM PARTS AND
MATERIALS



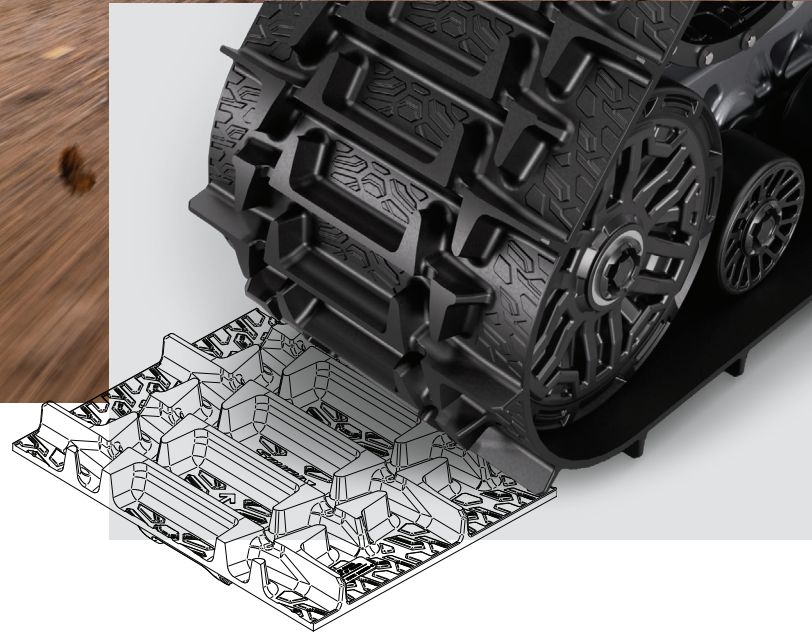
- **Ultra thick sturdy Compressed UHMW-PE sprocket teeth** for ultimate service life.
- 1.58 in (40 mm) **forged chromoly main axle** for increased load capacity.
- **Triple-lip seal with integrated grease port** for easy lubrication and complete water drainage.
- **Automotive style bolt-on double-row** tapered roller bearings.
- **One-piece cast-iron** frame made of fatigue and rust resistant 206 aluminum alloy.
- **Guide wheels with aluminum core** for increased longevity.
- **Tandem made of very hard Hardox® 450 steel** featuring high resistance to impacts and to bending under heavy loads.
- Pivoting axle **made of 7075 aluminum over-molded with rubber** for high strength.
- **Chromoly tensioner shafts** for high protection against impacts when crossing obstacles.
- Tracks feature **extra wide traction lugs designed** for torque transmission.
- **Intermediate support wheels made of sturdy UHMW-PE** for high abrasion resistance.
- **Screw-on wheel caps with O ring** to prevent contamination.



GREAT HANDLING AND UNPARALLELED COMFORT ON ROUGH TERRAIN

Best handling with the smallest turning radius in the industry

- Optimized track profile with horizontally alternating lugs to prevent lateral sliding.
- Minimal alteration of the vehicle's original turning radius.



GREAT COMFORT AND INCREDIBLE QUIET RIDE AT HIGH SPEED

Better shock absorption and vibration reduction

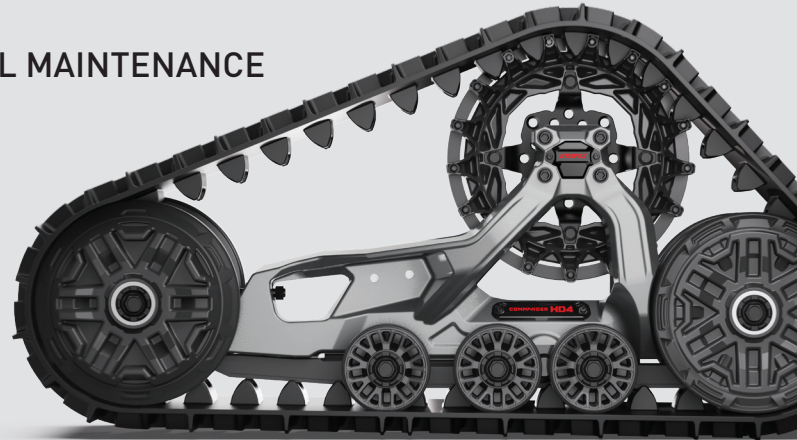
- Optimized track tread for comfortable and quieter rides.
- Optimized shock absorption for increased comfort in rugged terrain thanks to the thick rubber strips covering the front and rear guide wheels, the comfort slide under the frame, and the rear wheel tandem.
- Optimized wheel spacing to reduce vibrations.



4,000 LBS. LOAD CAPACITY

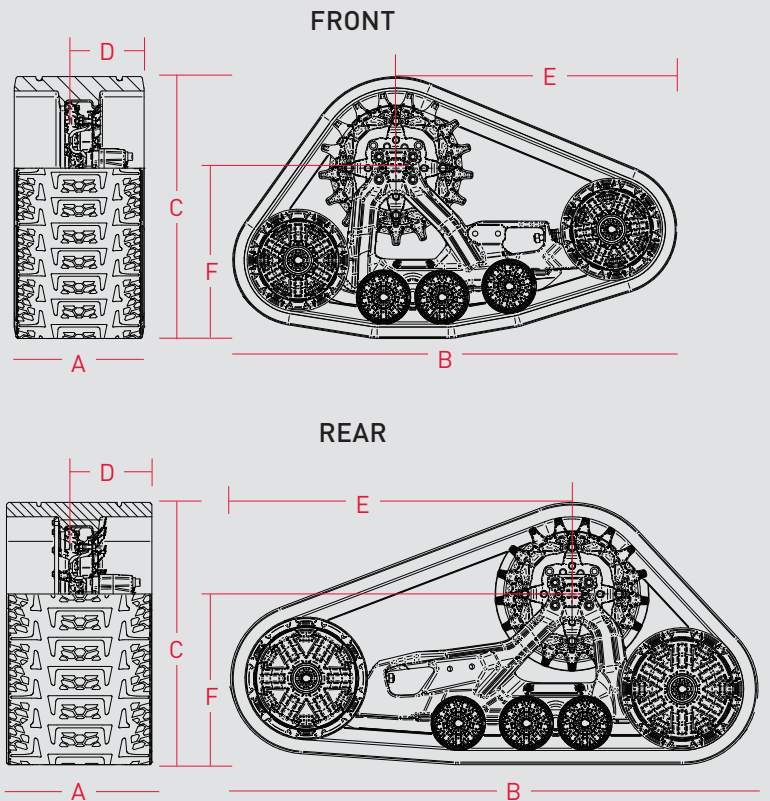
UNRIVALLED 4-SEASON PERFORMANCE

MINIMAL MAINTENANCE



TECHNICAL SPECIFICATIONS

SYSTEM		
	Weight	Front: 61,7 kg (136 lbs) Rear: 82,6 kg (182 lbs)
A	Width	Front: 317,5 mm (12,5 po) Rear: 355,6 mm (14 po)
B	Length	Front: 1 086 mm (42,8 po) Rear: 1 290 mm (50,8 po)
C	Height	Front: 640 mm (25,2 po) Rear: 641 mm (25,2 po)
D	Offset Width	Front: 184,2 mm (7,25 po) Rear: 203,2 mm (8 po)
E	Offset Length	Front: 686 mm (27 po) Rear: 838 mm (33 po)
F	Ground Clearance	Front: 416 mm (16,38 po) Rear: 419 mm (16,5 po)
	Ground Surface	1,60 m ² (2 482 po ²)
	Maintained Speed (average)	2/3
	Ground Clearance Offset (average)	+ 127 mm (5 po)
TRACK		
A	Width	Front: 317,5 mm (12,5 po) Rear: 355,6 mm (14 po)
	Length	Front: 2 540 mm (100 po) Rear: 2 964 mm (116,7 po)
	Lug Height	Performance Track : 28,6 mm (1,125 po)



SIMPLE AND EFFECTIVE INVENTORY MANAGEMENT

Inventory management of the Commander product range is simplified due to fastener compatibility between WSS4 and HD4 systems.

**Some exceptions apply. Please, check if your track set is compatible with the weight of your vehicle.*



1. Scan the QR code using your mobile phone.
2. This will bring you to the application table in PDF version.
3. The part numbers will redirect you to Kimpex B2B: order.kimpex.com



KIMPEX

**COMMANDER
HD4**

HEAVY-DUTY
UTV TRACK SYSTEM

4,000 LBS. LOAD CAPACITY // REAL 4-SEASON PERFORMANCE // MINIMAL MAINTENANCE

KIMPEX.COM

6400 SAINT-ROCH STREET, DRUMMONDVILLE, QUEBEC J2B 6V4